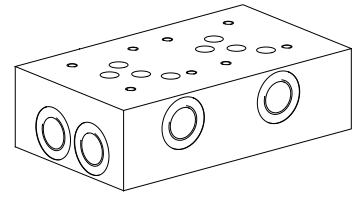


Multi-station subplate

- Threaded connection G1/2"
- $p_{max} = 350$ bar

NG10
 ISO 4401-05

DESCRIPTION

Multi-station subplates with interfaces for 2 to 4 valves NG10 acc. to ISO 4401-05. The multi-station subplates are made from phosphated steel.

TYPE CODE

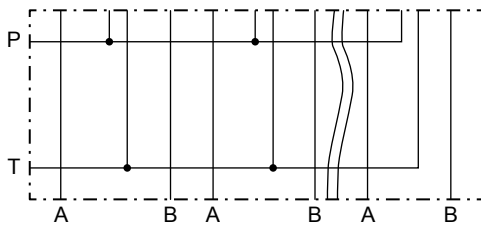
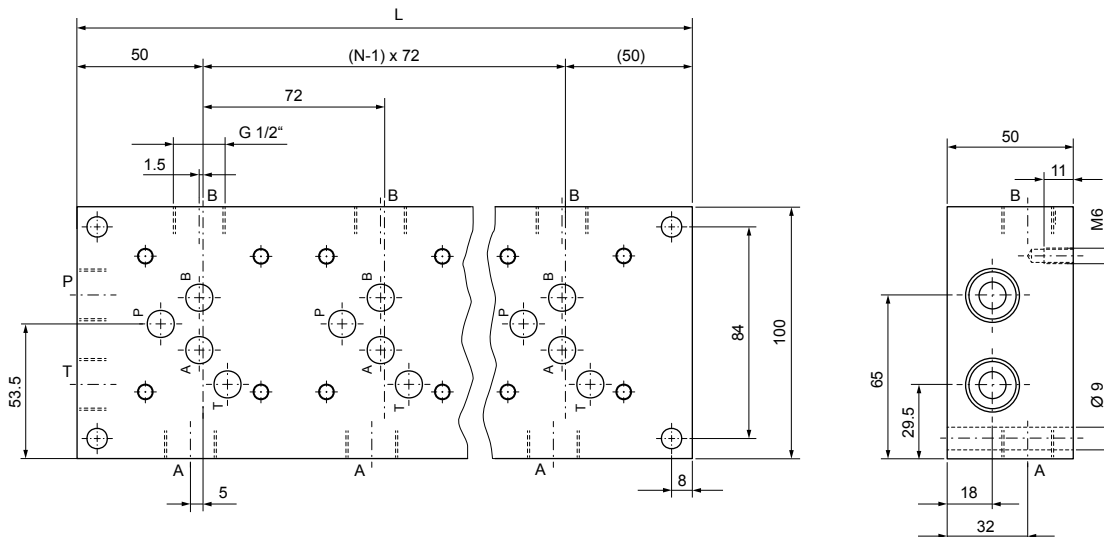
International standard interface ISO	A	10	/	<input type="checkbox"/>	#	<input type="checkbox"/>
Nominal size 10						
Number of valves						
Design-Index (Subject to change)						

GENERAL CHARACTERISTICS

Designation	Multi-station subplate
Nominal size	NG10 selon ISO 4401-05
Fastening	4 location holes for cylinder screw M8
Connection	Threaded connections A, B, P, T G1/2"
Mounting position	any
Weight	see chart

HYDRAULIC SPECIFICATIONS

Working pressure	$p_{max} = 350$ bar
------------------	---------------------

SYMBOL

DIMENSIONS


Type	No. of valves N	Dimension L (mm)	Weight m (kg)
A10/2	2	172	5,80
A10/3	3	244	8,30
A10/4	4	316	10,80