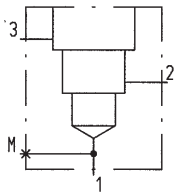


- Line mount body**
- for 3-way-valves in screw-in cartridge construction
 - $p_{max} = 400 \text{ bar}$

M16x1,5
M18x1,5
M22x1,5

M33x2
M42x2

TYPES
TYPE CODE
F04


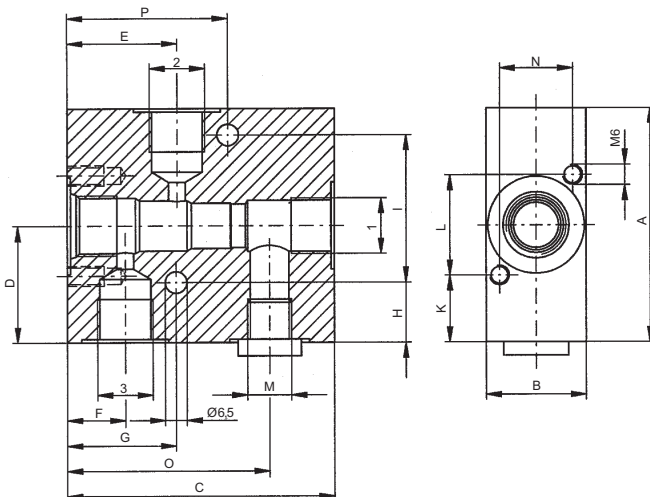
Line mount body made of steel

 Port size G 1/4" G14 G 3/8" G38 G 1/2" G12
 G 3/4" G34 G 1 1/4" G114

 Cavity thread diameter M16x1,5 16 G 1/4"
 M18x1,5 18 G 3/8"
 M22x1,5 22 G 3/8" und G 1/2"
 M33x2 33 G 3/4"
 M42x2 42 G 1 1/4"

Variations F04

Design index (subject to change)

 KG - F04 #
DIMENSIONS F04

TYPE F04

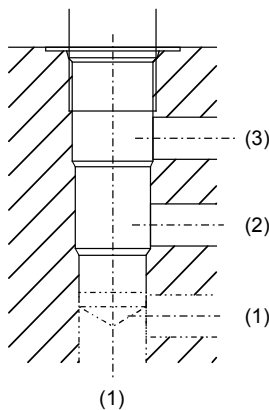
| Ordering code | Size | Ports | | | | Dimensions (in mm) | | | | | | | | | | | | | Weight | |
|---------------|---------|----------|----------|----------|-------|--------------------|----|-----|----|------|------|------|----|----|------|----|----|------|--------|------|
| | | 1 | 2 | 3 | M | A | B | C | D | E | F | G | H | I | K | L | N | O | | P |
| KGG1416-F04 | M16x1,5 | G 1/4" | G1/4" | G1/4" | G1/4" | 60 | 40 | 60 | 30 | 20.3 | 13 | 28 | 8 | 44 | 15 | 30 | 30 | 44 | 38 | 0.98 |
| KGG3818-F04 | M18x1,5 | G 3/8" | G3/8" | G3/8" | G1/4" | 70 | 30 | 80 | 35 | 32.8 | 17.3 | 32.5 | 18 | 44 | 20 | 30 | 22 | 60.5 | 48 | 1.10 |
| KGG3822-F04 | M22x1,5 | G 3/8" | G3/8" | G3/8" | G1/4" | 80 | 45 | 100 | 40 | 44 | 22.5 | 55 | 11 | 58 | 25 | 30 | 32 | 77 | 25 | 2.45 |
| KGG1222-F04 | M22x1,5 | G 1/2" | G1/2" | G1/2" | G1/4" | 80 | 45 | 100 | 40 | 44 | 22.5 | 55 | 11 | 58 | 25 | 30 | 32 | 77 | 25 | 2.45 |
| KGG3433-F04 | M33x2 | G 3/4" | G3/4" | G3/4" | G1/4" | 100 | 50 | 110 | 50 | 58.5 | 30.5 | 70 | 11 | 80 | 27.5 | 45 | 34 | 89.5 | 35 | 3.40 |
| KGG11442-F04 | M42x2 | G 1 1/4" | G 1 1/4" | G 1 1/4" | G1/4" | 120 | 60 | 130 | 60 | 66.5 | 33.4 | 72 | 15 | 88 | 32.5 | 55 | 44 | 100 | 25 | 5.40 |

GENERAL SPECIFICATIONS

| | |
|--------------------|------------------------------------|
| Description | Line mount body |
| Mounting | 2 location holes 2 tapped holes |
| Connection | Threated connections |
| Mounting position | see valve data sheet |
| Surface protection | zinc-nickel coated |

HYDRAULIC SPECIFICATIONS

| | |
|---------------|---------------------|
| Peak pressure | $p_{max} = 400$ bar |
|---------------|---------------------|

CARTRIDGE CAVITY


| Type | Cavity according to: | For detailed cavity drawing see data sheet: |
|----------------|----------------------|---|
| M16x1,5 | WAG-Norm | 2.13-1051 |
| M18x1,5 | WAG-Norm | 2.13-1020 |
| M22x1,5 | ISO 7789-22-04-0-98 | 2.13-1004 |
| M33x2 | ISO 7789-33-04-0-98 | 2.13-1040 |
| M42x2 | ISO 7789-42-04-0-07 | 2.13-1047 |

SCREW-IN CARTRIDGES INSTALLED

According to the type the following screw-in cartridges can be installed in the line mount bodies:

| Type | Data sheet no. |
|----------------|----------------|
| M16x1,5 | |
| MD.PM16 | 2.2-508 |
| MDBPM16 | 2.3-602 |
| MDIPM16 | 2.3-603 |
| MDPPM16 | 2.3-605 |
| MGPPM16 | 2.3-607 |
| MGBPM16 | 2.3-608 |
| M18x1,5 | |
| SDSPM18-FG | 1.11-2051 |
| SDYPM18-FG | 1.11-2052 |
| SDZPM18-FG | 1.11-2054 |
| MV.PM18 | 2.2-510 |
| MVPPM18 | 2.3-610 |
| M22x1,5 | |
| SDSPM22-FG | 1.11-2061 |
| SDYPM22-FG | 1.11-2064 |
| SLYPM22-FG | 1.11-2066 |
| MV.PM22 | 2.2-530 |
| MVEPM22 | 2.2-536 |
| MPPPM22 | 2.2-625 |
| MPBPM22 | 2.2-627 |
| MVPPM22 | 2.3-629 |
| MVPPM22-../ME | 2.3-632 |
| MVBPM22 | 2.3-635 |
| MQPPM22 | 2.3-641 |
| MQPPM22-../ME | 2.3-643 |
| QD.PM22 | 2.5-540 |
| QDPPM22 | 2.6-644 |
| QDPPM22-../ME | 2.6-647 |
| M33x2 | |
| MVPPM33 | 2.3-649 |
| MVPPM33-../ME | 2.3-652 |
| MVBPM33 | 2.3-654 |
| QD.PM33 | 2.5-555 |
| QDPPM33 | 2.6-666 |
| QDPPM33-../ME | 2.6-668 |
| M42x2 | |
| MVPPM42 | 2.3-690 |
| QDPPM42 | 2.6-695 |


CAUTION!

The performance data refer to the screw-in cartridges only. The additional pressure drop in the line mount body must be taken into consideration.

Technical explanation see data sheet 1.0-100