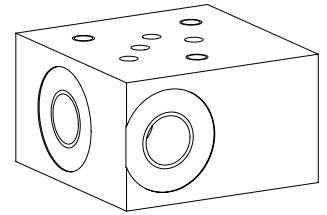
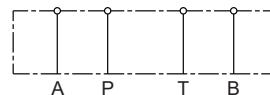


Threaded subplate

- ◆ $p_{max} = 350$ bar
- ◆ Connections G1/4"

NG4-Mini
 Wandfluh standard

DESCRIPTION

Threaded subplate with mounting interface for vertical stacking and threaded connection of the connections A, B, P, T.

SYMBOL

TYPE CODE

Mounting interface acc. to Wandfluh standard

Threaded subplate

Nominal size-4 Mini

Type list

Connections on the side P, T, A, B

S

Connections on the bottom P, T, A, B

U

Connections location A, B side, P, T bottom

SU

B G 4 #

Design index (subject to change)

2.9-10

GENERAL SPECIFICATIONS

Designation	Threaded subplate
Mounting	Installation in pipes
Nominal size	NG4-Mini according to Wandfluh standard
Weight	0,50 kg (BG4S) 0,75 kg (BG4U) 0,50 kg (BG4SU)

INSTALLATION NOTES

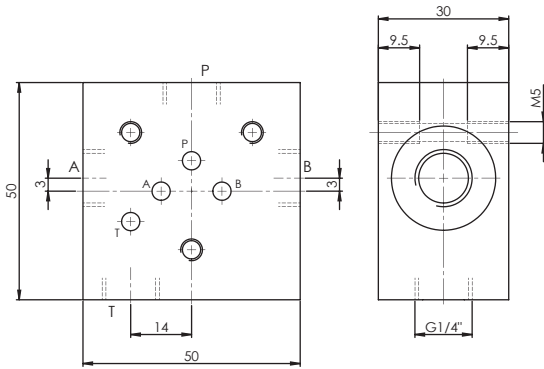
Mounting type	BG4S: 3 fixing threads for M5 BG4U: 22 fixing holes for M5 BG4SU: 2 fixing threads for M5
Mounting position	Any
Threaded connections	G1/4" in A, B, P, T

SURFACE TREATMENT

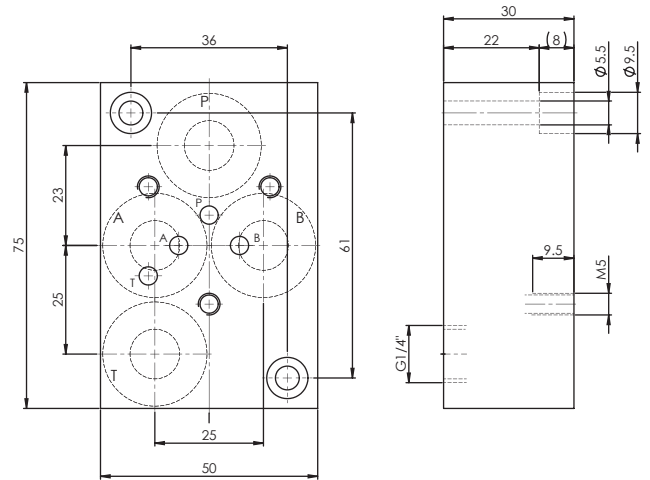
- ◆ The plates made of steel are zinc-nickel coated

DIMENSIONS

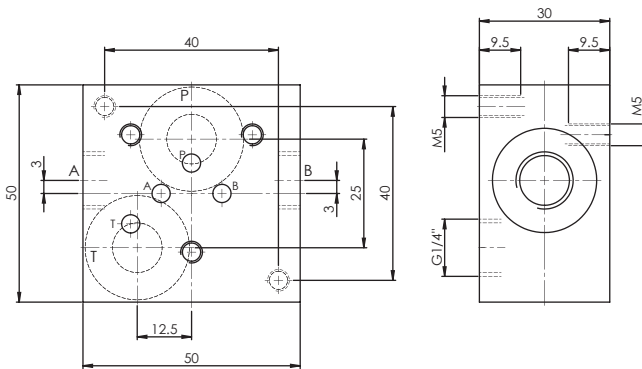
BG4S



BG4U



BG4SU



HYDRAULIC CONNECTION

