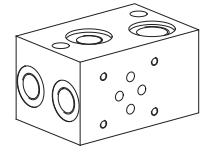


**Module type manifold blocks**

 •  $p_{max} = 350 \text{ bar}$ 
**NG6**  
 ISO 4401-03

**DESCRIPTION**

Module type manifold blocks with interface NG6 acc. to ISO 4401-03. Using an adapter plate and connecting blocks, combinations with NG3-Mini, NG4-Mini and NG10 are also possible (see also data sheet 2.9-80). The module type manifold blocks are made from steel and are zinc-nickel coated.

**FUNCTION**

The module type manifold blocks are available with 3 different basic circuits, namely parallel, serial and pressure reduction circuit.

**APPLICATION**

This block system can be used as a replacement for expensive special blocks. Existing systems may be extended or reduced by adding as removing modular blocks.

**TYPE CODE**

	A	LV	6	□	#	□
International standard interface ISO						
Module type manifold						
Nominal size 6						
Type list						
Parallel circuit	<input type="checkbox"/> P					
Pressure reduction circuit	<input type="checkbox"/> D					
Design-Index (Subject to change)						

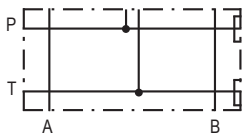
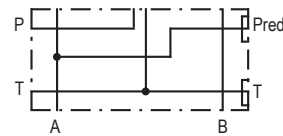
**GENERAL SPECIFICATIONS**

Description	Parallel- and pressure reduction circuit
Nominal size	NG6 acc. to ISO 4401-03
Fastening	see data sheet 2.9-124
Connection	Threaded connections P, P <sub>red</sub> , T1, A, B = G3/8" T = G1/2"
Mounting position	any
Weight:	m = 2,0 kg

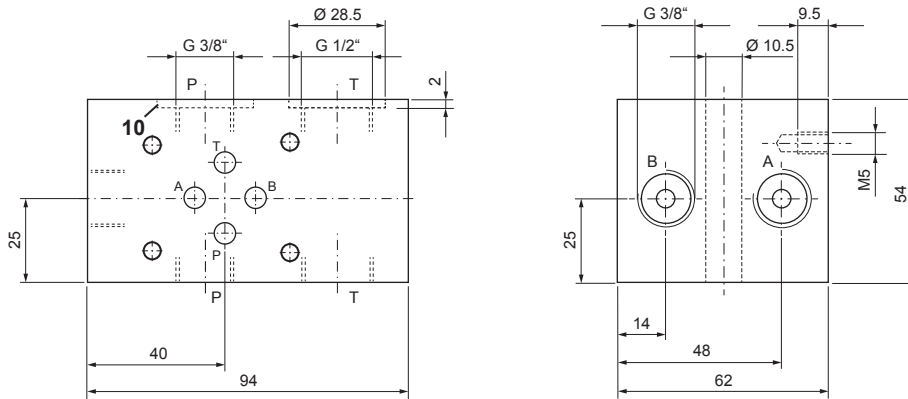
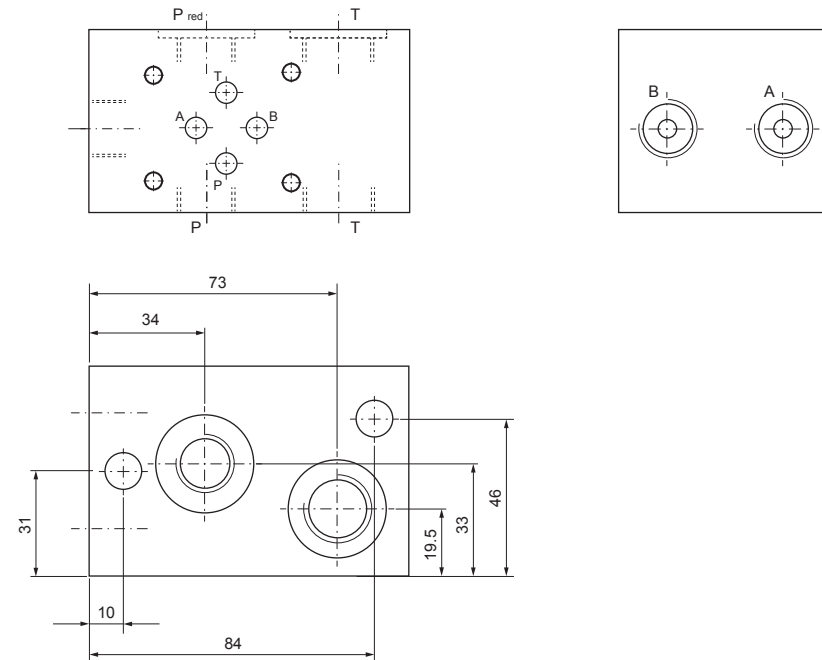
**HYDRAULIC SPECIFICATIONS**

Working pressure	$p_{max} = 350 \text{ bar}$
------------------	-----------------------------

**SYMBOLS**

 Block for parallel circuit  
 ALV6P

 Block for pressure reduction circuit  
 ALV6D


**DIMENSIONS**

 Block for parallel circuit  
 ALV6P

 Block for pressure reduction circuit  
 ALV6D

**PARTS LIST**

Position	Article	Description
10	160.2238	O-ring ID 23,81x2,62

**ACCESSORIES**

 Fixing brackets AB61/AB62 and studs  
 see data sheet 2.9-124