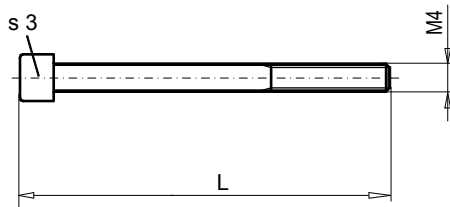
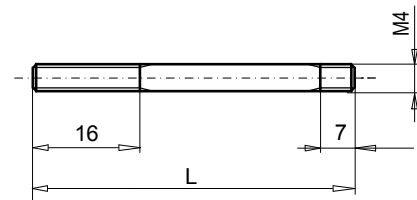
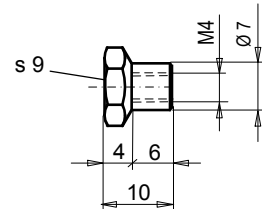


Stack assembly

NG3-Mini[®]
SOCKET HEAD CAP SCREW M4xL

STUD M4xL

STEP NUT M4
Art. Nr. 154.7404

FIXATION WITH SOCKET HEAD CAP SCREWS

Effective stack length	Description and dimension (M4xL)	Fastening torque	Article No.
38 ... 40	Cap screw M4x45 Steel 8.8 zinc coated DIN 912	2,6 Nm	246.1146
43 ... 45	Cap screw M4x50 Steel 8.8 zinc coated DIN 912	2,6 Nm	246.1151
48 ... 50	Cap screw M4x55 Steel 8.8 zinc coated DIN 912	2,6 Nm	246.1156
53 ... 55	Cap screw M4x60 Steel 8.8 zinc coated DIN 912	2,6 Nm	246.1161
56 ... 58	Cap screw M4x63 Steel 8.8 zinc coated	2,6 Nm	249.1007
58 ... 60	Cap screw M4x65 Steel 12.9 black DIN 912	5 Nm	246.1365
61 ... 63	Cap screw M4x68 Steel 8.8 zinc coated	2,6 Nm	249.1005
63 ... 65	Cap screw M4x70 Steel 8.8 zinc coated DIN 912	2,6 Nm	246.1171
68 ... 70	Cap screw M4x75 Steel 8.8 zinc coated	2,6 Nm	249.1004
73 ... 75	Cap screw M4x80 Steel 8.8 zinc coated DIN 912	2,6 Nm	246.1181

FIXATION WITH STUDS AND STEP NUTS

Effective stack length	Description and dimension (M4xL)	Fastening torque	Article No.
52 ... 60	Stud M4x73 St 329 black	2,8 Nm	224.1006
84 ... 92	Stud M4x105 St 329 black	2,8 Nm	224.1007
93 ... 101	Stud M4x114 St 329 black	2,8 Nm	224.1009
115 ... 123	Stud M4x136 St 329 black	2,8 Nm	224.1005
146 ... 154	Stud M4x167 St 329 black	2,8 Nm	224.1004

Effective stack length = Length between head of screw and top of base plate