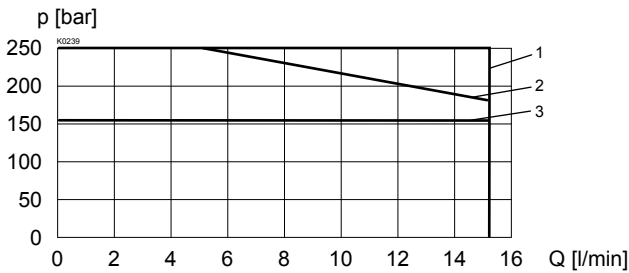
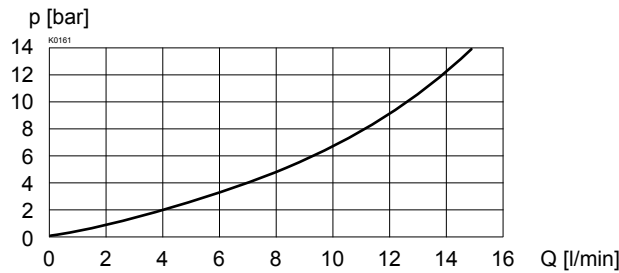




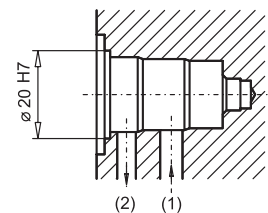
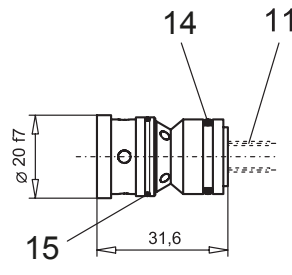
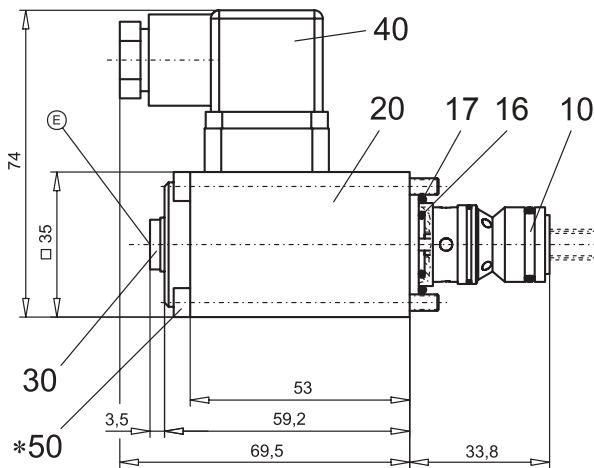
**CHARACTERISTICS** Oil viscosity  $\nu = 30 \text{ mm}^2/\text{s}$ 
 $p = f(Q)$  Performance limit at -10%


Type	Flow direction	
	1 → 2	2 → 1
M22040-S1265	3	3
S22040-S1265	1	2

 $\Delta p = f(Q)$  Pressure loss / flow characteristics

**DIMENSIONS**

22040-S1265-...

22040-S1265



For detailed cavity drawing and cavity tools see data sheet 2.13-1017

E = air bleed screw

**PARTS LIST**

Position	Article	Description
10	500.1005 500.1006	Poppet valve cart. 22040-S1265 Medium Poppet valve cart. 22040-S1265 Super
11	053.2101 053.2107	Spring 1 x 7,4 x 16,5 Medium Spring 1 x 7,4 x 19,25 Super
14	160.2140	O-ring ID 14,00 x 1,78
15	160.1161	O-ring ID 16,00 x 1,00
16	160.2120	O-ring ID 12,42 x 1,78
17	160.2204	O-ring ID 20,35 x 1,78
20	260.4... 260.5...	Medium-solenoid SIN35V Super-solenoid SIS35V
30	239.2033	Plug (incl. seal) HB0
40	219.2002	Plug
50	246.1161	Socket head cap screw M4 x 60 DIN 912

\* Cartridge supplied with fastening screw M4 x 60 for steel bodies/blocs. For aluminium bodies/blocs longer screws are recommended (min. 2 screw diameter).

**ACCESSORIES**

Cartridge built-in sandwich body:

Sandwich

Register 1.11

Special tool 983.2006 to poppet valve cartridge 22040-S1265

Technical explanation see data sheet 1.0-100