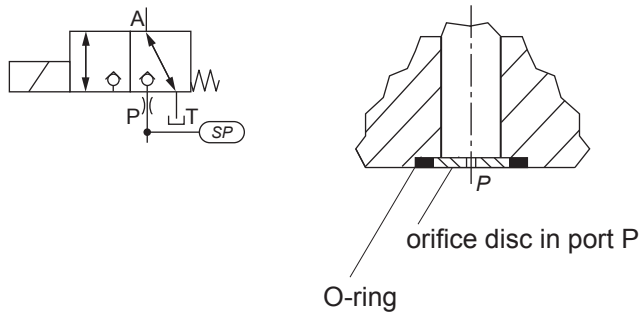
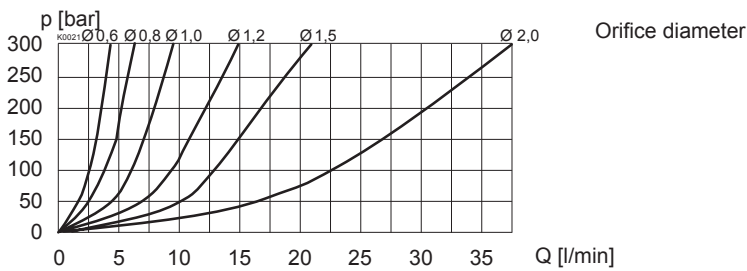


ORIFICE DISC FOR POPPET VALVES

A orifice is required if the volume flow during shifting might pass the performance limit (Q_{max}) of the valve. The corresponding orifice can be mounted by the customer and enlarged if necessary according to $\Delta p/Q$ characteristic of orifice disc below.

Example: accumulator in P line

CHARACTERISTICS oil viscosity $\nu = 30 \text{ mm}^2/\text{s}$
 $\Delta p = f(Q)$ Pressure loss/flow characteristics

Available orifice discs
Part no.

Orifice \varnothing	NG3	NG4-Mini	NG6	NG10
$\varnothing 0,6$	212.0481	212.0406	212.0448	
$\varnothing 0,8$		212.0440	212.0416	212.1466
$\varnothing 1,0$		212.0402	212.0407	212.1406
$\varnothing 1,2$		212.0469	212.0425	
$\varnothing 1,5$			212.0445	212.1477
$\varnothing 2,0$				212.1480