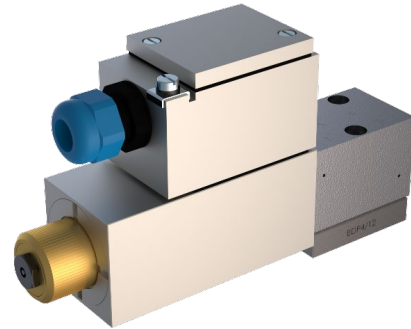


EXPLOSION PROOF SPOOL VALVE **WDZFA04_x_T6**

DIRECTIONAL VALVE EXPLOSION PROOF LOW LEAKAGE

Direct operated	WDZFA04_x_T6
4/2-way impulse valve	
4/3-way with spring centred mid position	
4/2-way with spring reset	
Q_{max}	20 l/min
p_{max}	350 bar
Leakage:	< 20 ml/min @ $P_{sys} = 120$ bar less opening & more overlap



4/2-way-spool valve WDZFA04_x_T6

DESCRIPTION

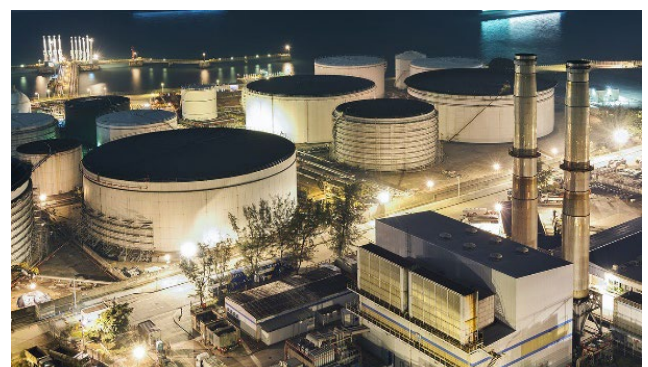
Direct operated solenoid spool valve with four connections in five-chamber design. With the solenoids deenergised, the spool is held in the center position by the spring (4/3), or switched back to the offset position (4/2). With the impulse spool (4/2), the spool is held in the switching position by the detent. Intrinsic safety is achieved by limiting the electric energy in the solenoid circuit by means of a separate intrinsically safe power supply. Therewith sparking is prevented from forming.



Example Oil & Gas

APPLICATION

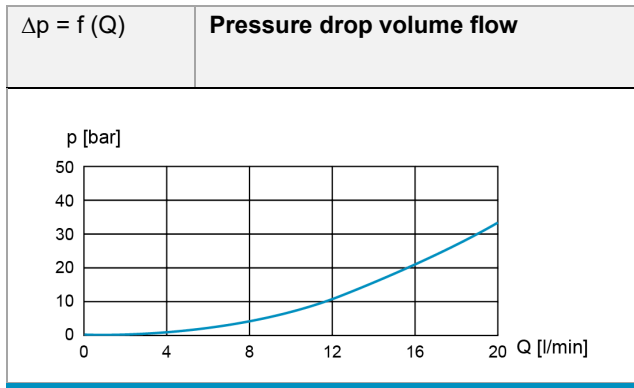
These valves are suitable for applications in explosion-hazard areas, open cast and also in mines. Spool valves are mainly used for controlling direction of movement and stopping of hydraulic cylinders and motors. The direction of movement is determined by the position of the spool and its symbol. Miniature valves are used where both, reduced dimensions and weight are important.



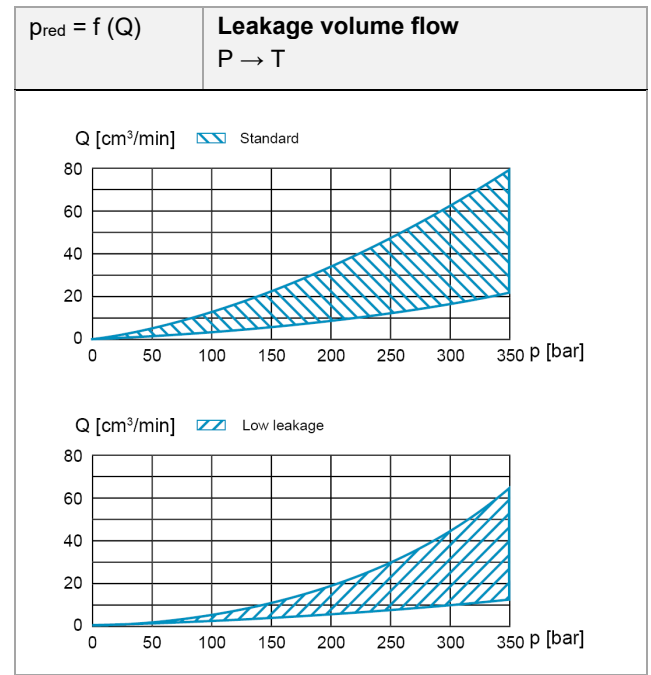
Example Processing industry



VOLUME FLOW CHARACTERISTICS

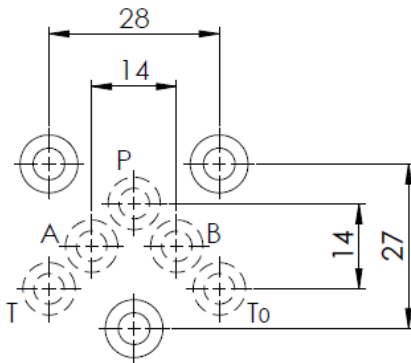


Pressure drop volume flow



Leakage volume flow

HYDRAULIC CONNECTION



Flange construction NG4

CERTIFICATES

	Surface gas and dust	Mining
ATEX	X	X
IECEX	X	X

The certificates can be found on www.wandfluh.com

