

M42 x 2 CARTRIDGE VALVES

FIELDS OF APPLICATION

M42 cartridge valves are used where large volume flows are controlled and regulated. Thanks to a small hysteresis, these valves can be adjusted very sensitively. For the control, Wandfluh proportional amplifier and control electronics are available

ELECTRONICS

For the control of proportional spool valves, electronic modules in different executions are available. Regardless of the design, the modules can be programmed using the free parameterisation software PASO.



Amplifier and controller electronics



4/2-way or 4/3-way spool valve



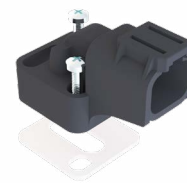
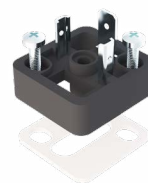
Pressure relief valve MVPPM42



Large hydraulic cylinder

CONNECTOR VARIANTS

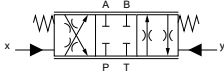
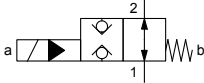
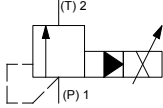
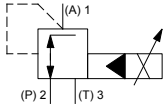
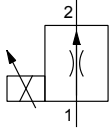
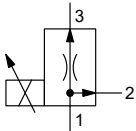
The solenoids are available in different versions.



DIN, German and Junior Timer



CARTRIDGE VALVES

Designation	Symbol	Data sheet no., designation	Q_{max} (l/min)	p_{max} (bar)
Proportional spool valve pilot operated		1.10-2410 WVPPM42	250	315
Poppet valve		1.11-2091 SVSPM42	300	350
Pressure relief valve proportional		2.3-590 BVPPM42	400	400
Pressure relief valve proportional		2.3-690 MVPPM42	250	400
2-way flow control valve proportional		2.6-690 QNPPM42	170	350
2-way flow control valve proportional		2.6-695 QDPPM42	200	350

