

2-WAY SLIP-IN CARTRIDGES **C_ENxx**

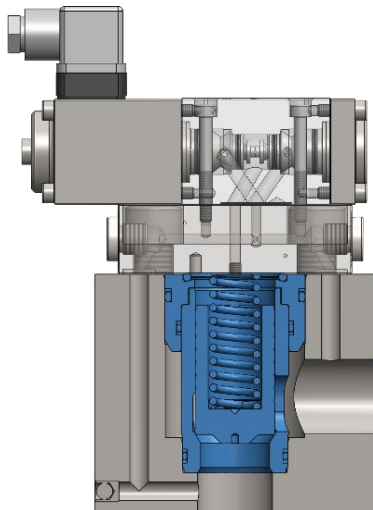
THE C_ENXX SLIP-IN CARTRIDGES SERIES

Designation	Pressure	Flow
C_EN16	630 bar	270 l/min
C_EN25	630 bar	600 l/min
C_EN32	630 bar	980 l/min
C_EN40	630 bar	1,620 l/min
C_EN50	630 bar	2,360 l/min

Volume flow data at Δp of 5 bar

DESCRIPTION

2-way slip-in cartridge valves are particularly compact logic elements for block construction. They make it possible to implement a wide range of hydraulic functions for high flow applications in the smallest of spaces. The valves are installed into a bore standardised according to ISO 7368 in the control blocks and closed with a cover in which the pilot valve is usually also installed.



C_EN16



C_EN25



C_EN32



C_EN40



C_EN50



Installation and control of a slip-in cartridge valve

C_ENxx series in different sizes



SYMBOL

2/2-WAY FUNCTION

PRESSURE RELIEF

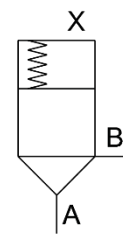
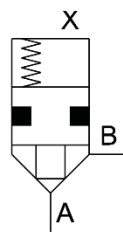
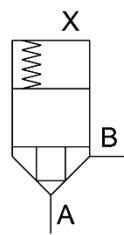
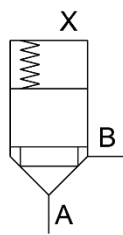
Area ratio

1 : 1,06

1 : 1,5

1 : 1,5

1 : 1,0



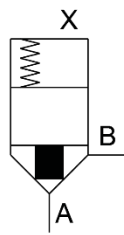
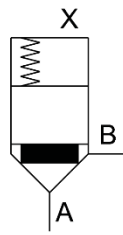
Execution

standard

standard

with seal
B -> X

standard



Execution

with damping

with damping

number of different functions. These include, for example, spool valves with start, stop and directional control, pressure reducing valves for pressure limitation, pressure relief, pressure sequence and discharge function or non-return valves (spool valves with non-return function).

VERSIONS

The valves are available in the two different basic versions of the switching and the pressure function and can be supplemented by spools with non-return function, dampening nose and/or seal. With the modular construction of the individual valve parts and the use of appropriate cover and pilot valve combinations, it is possible to obtain a large

FEATURES

- High max. pressure up to 630 bar
- Max. flow up to 2.360 l/min
- Low pressure drop (Δp)
- Many functions possible
- Compact block construction
- High power density
- Low weight

