

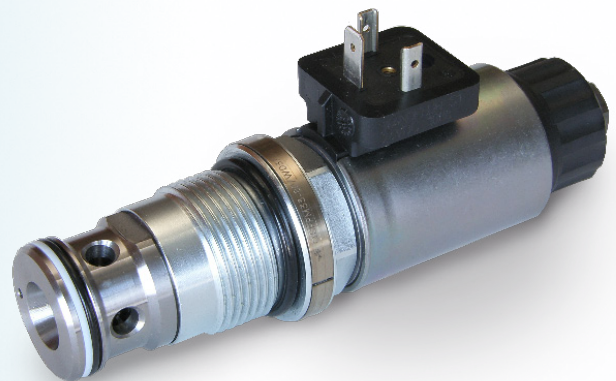
The All-In-One-Valve

Economy and ease of operation are decisive criteria today.

A new principle for the lowering of loads does justice to these demands: The All-In-One-valve.

With this valve, it is possible to comply with the requirements of the EC-guideline EN 1726-1

- ◆ Maximum permissible lowering speed
- ◆ Maximum permissible lowering of a load.



All-In-One

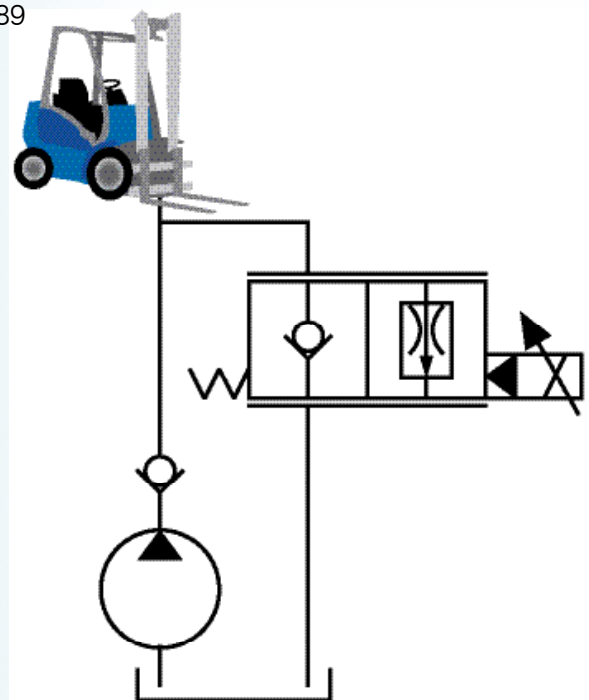
- ✓ Poppet valve for the secure holding of a load
- ✓ Proportional flow control valve for controlling the speed
- ✓ Through-flow limitation for complying with the maximum permissible lowering speed

Screw-in cartridge QSPPM33

- ✓ Tight seating, load-compensated 2-way proportional flow control cartridge
- ✓ For cavity M33x2 in accordance with ISO 7789
- ✓ $p_{\max} = 250 \text{ bar}$, $Q_{\max} = 100 \text{ l/min}$
- ✓ Signal hysteresis $< 8\%$
- ✓ Nominal voltage 12 VDC and 24 VDC

The All-In-One-Concept

- ◆ 3 functions in a single valve
- ◆ Only one cavity for the modular construction
- ◆ Only one solenoid for the electrical driving

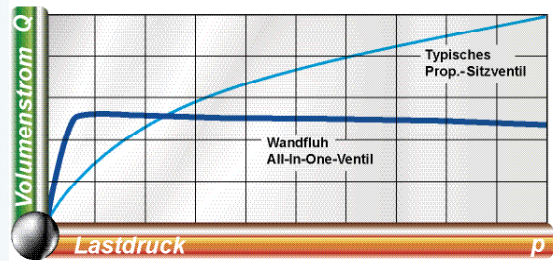


Advantages of the All-In-One - valve (QSPPM33)

- ◆ High lowering speed in case of a light load thanks to an optimised volume flow/pressure characteristic



maximal zulässige
Geschwindigkeit

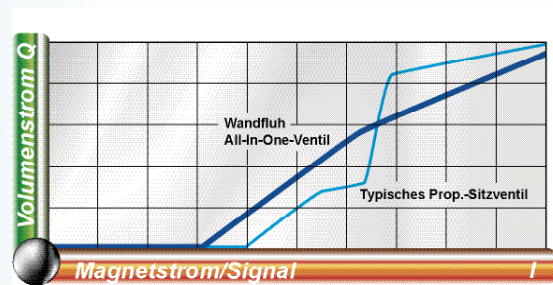


- ◆ Maximum permissible lowering speed in case of a heavy load thanks to the through-flow limitation



maximal zulässige
Geschwindigkeit

- ◆ Smooth handling thanks to an optimised volume flow/signal characteristic curve and a signal hysteresis of <8%



- ◆ No lowering, also in the case of heavy loads, thanks to the tight seating execution



Applications

- ◆ Forklift trucks, cranes, elevating platforms, lifts/elevators, etc.
- ◆ Direct installation in the pump flange of a Mini-Powerpack

Further Information

You will find further technical information on the corresponding data sheet 2.6-661 or on our website. We will be happy to advise you in the selection of the suitable components for your application.

Do not hesitate to contact us.